

# PRODUCT INFORMATION PACKET

Model No: 056B17D56  
Catalog No: K016  
3/4, 1800, DP, 56, 1/60/115/208-230  
Pressure Washers



Regal and Marathon are trademarks of Regal Beloit Corporation or one of its affiliated companies.  
©2018 Regal Beloit Corporation, All Rights Reserved. MC017097E

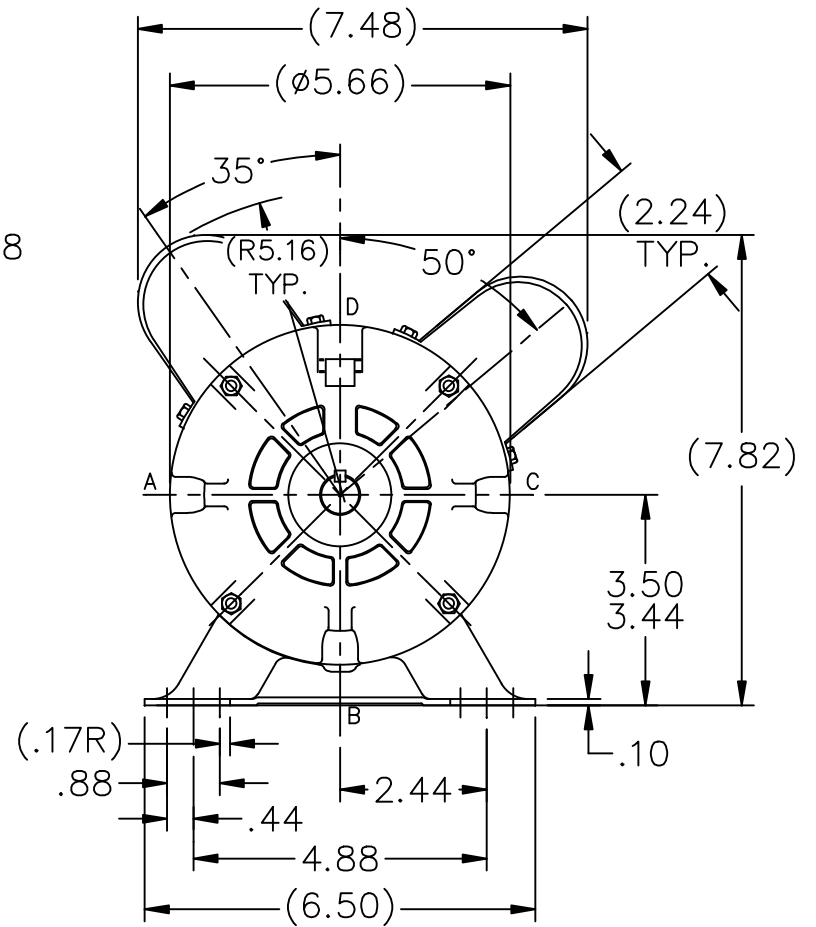
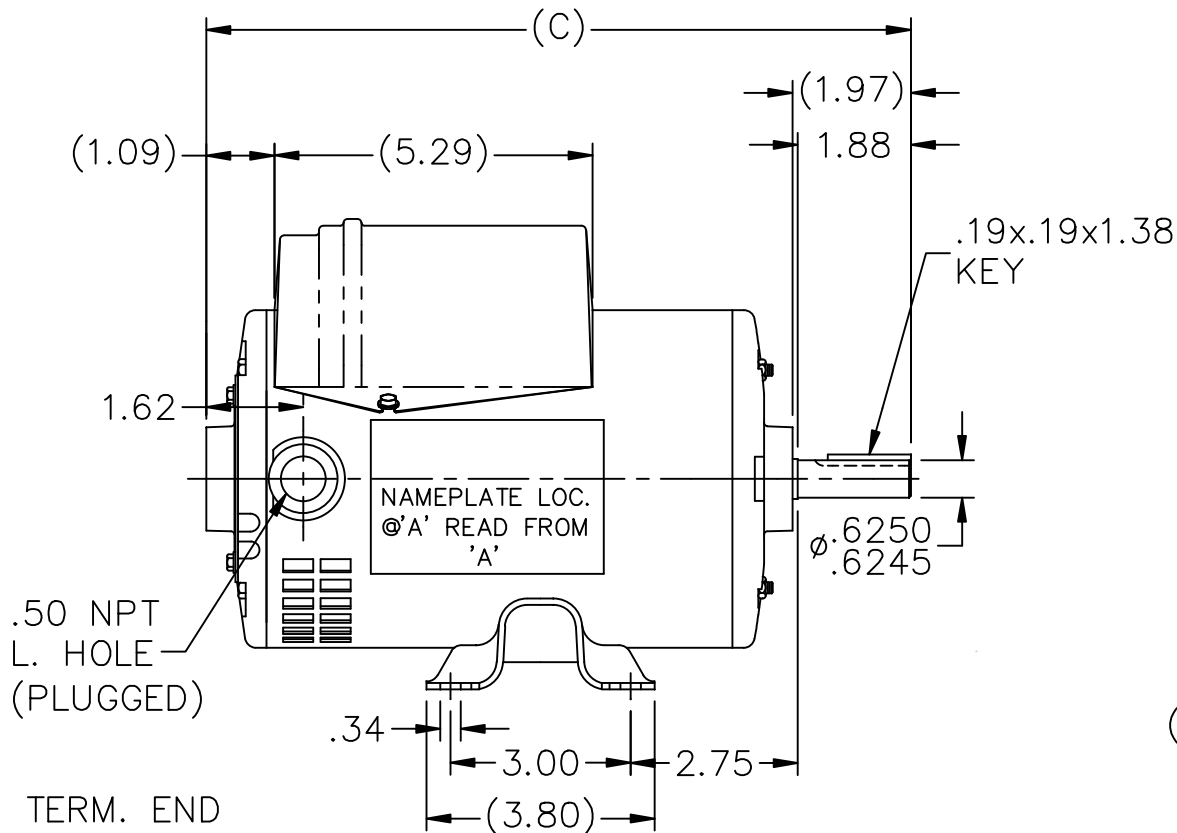
**Nameplate Specifications**

Output HP	<b>0.75 Hp</b>	Output KW	<b>0.56 kW</b>
Frequency	<b>60 Hz</b>	Voltage	<b>115/208-230 V</b>
Current	<b>11.0/5.5 A</b>	Speed	<b>1725 rpm</b>
Service Factor	<b>1.25</b>	Phase	<b>1</b>
Efficiency	<b>72 %</b>	Duty	<b>Continuous</b>
Insulation Class	<b>B</b>	Design Code	<b>NO DESIGN CODE</b>
KVA Code	<b>K</b>	Frame	<b>56</b>
Enclosure	<b>Drip Proof</b>	Overload Protector	<b>Manual</b>
Ambient Temperature	<b>40 °C</b>	Drive End Bearing Size	<b>6203</b>
Opp Drive End Bearing Size	<b>6203</b>	UL	<b>Recognized</b>
CSA	<b>Y</b>	CE	<b>Y</b>
IP Code	<b>22</b>		

**Technical Specifications**

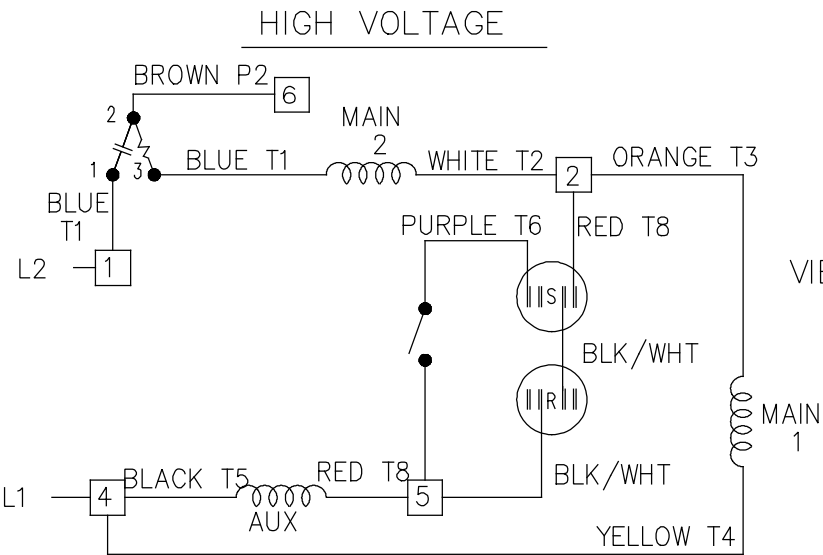
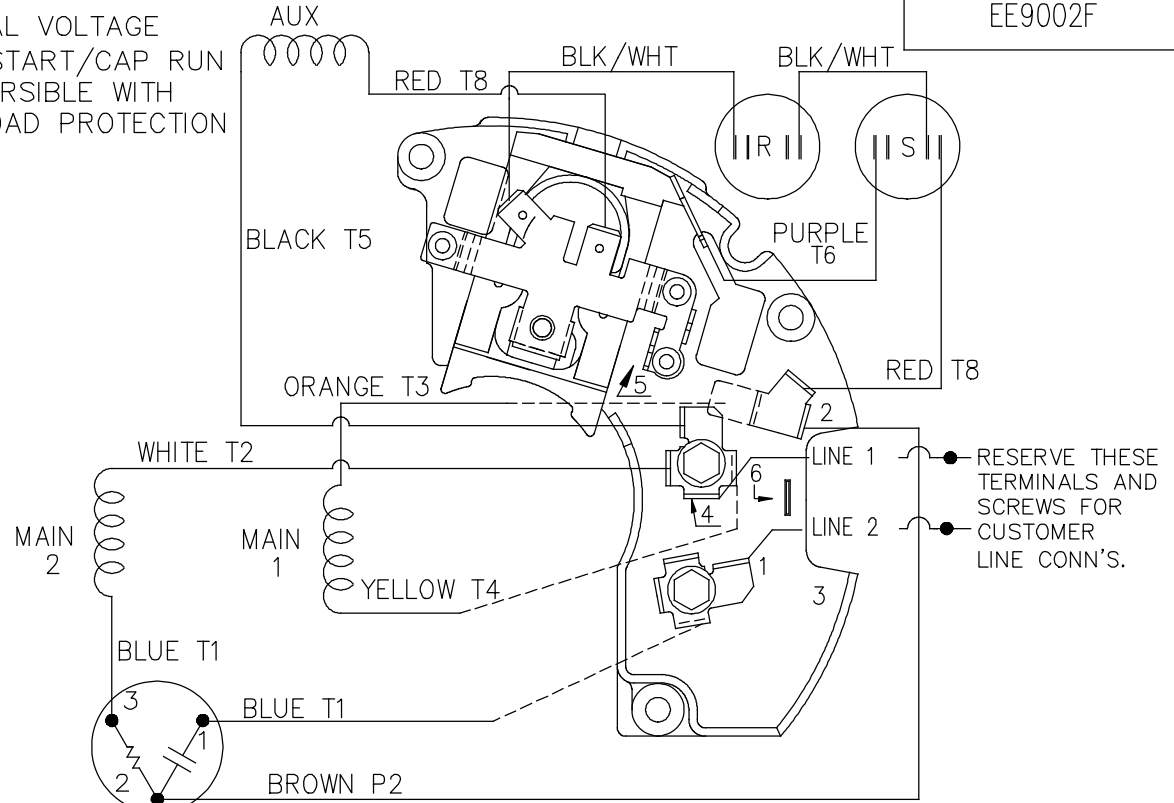
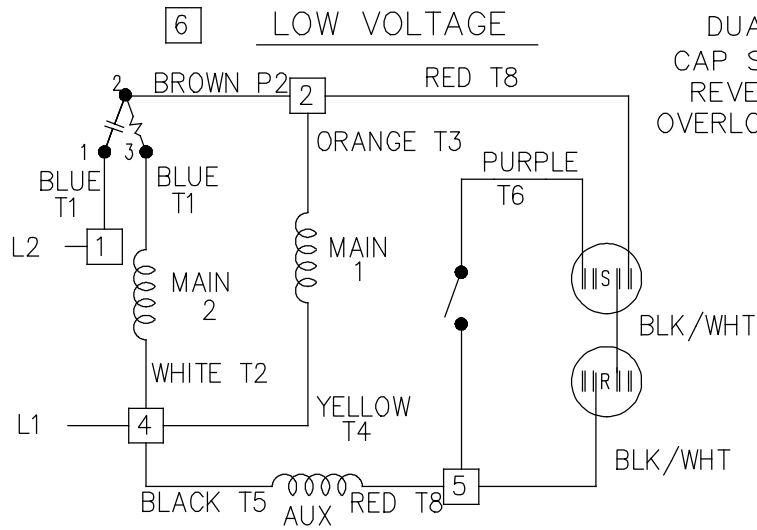
Electrical Type	<b>Capacitor Start Capacitor Run</b>	Starting Method	<b>Across The Line</b>
Poles	<b>4</b>	Rotation	<b>Selective Counterclockwise</b>
Mounting	<b>Rigid Base</b>	Motor Orientation	<b>Horizontal</b>
Drive End Bearing	<b>Ball</b>	Opp Drive End Bearing	<b>Ball</b>
Frame Material	<b>Rolled Steel</b>	Shaft Type	<b>T</b>
Overall Length	<b>11.47 in</b>	Frame Length	<b>7.50 in</b>
Shaft Diameter	<b>0.625 in</b>	Shaft Extension	<b>1.97 in</b>
Assembly/Box Mounting	<b>F1 Only</b>		
Outline Drawing	<b>A-SS73711-750</b>	Connection Diagram	<b>A-EE9002F</b>

**This is an uncontrolled document once printed or downloaded and is subject to change without notice. Date Created: 10/08/2018**



DASH	C
700	10.97
725	11.22
750	11.47

			TOLERANCES UNLESS SPECIFIED			DRAWN SMC 03-07-1991					
			DEC.	INCHES		CHK	ML	03-08-1991			
7	CHG NP LOC 'READ FROM' NOTE ISAAC 10-5176	TF 12-09-2010	.X	±.1	<b>TITLE OUTLINE</b> 48 FR. - 1 $\phi$	APPD	GK	03-08-1991			
6	HEIGHT DIM IS CHANGED TO BIGGER CAP COVER SIDE.	HKY 09-13-2010	.XX	±.03		SCALE	5=16				
5	REDRAWN IN AUTOCAD	TAT 05-19-2005	ML	.XXX ±.005		REF					
4	REDRAWN ON CADD	SMC 03-07-1991		.XXXX ±.0005		MAT'L.	FMF				
NO.	REVISION	BY & DATE	CHK	ANG ±7'30"		FINISH	PREV				
THIS DRAWING IN DESIGN AND DETAIL IS OUR PROPERTY AND MUST NOT BE USED EXCEPT IN CONNECTION WITH OUR WORK ALL RIGHTS OF DESIGN AND INVENTION ARE RESERVED THIS IS AN ELECTRONICALLY GENERATED DOCUMENT - DO NOT SCALE THIS PRINT			RFP		CAD FILE	ss73711	SIZE	DRAWING NO.	PAGE	OF	REV.
			DIST	WP			A	SS73711			7



VIEWING TERM END

LOW VOLTAGE CCW ROTATION SHOWN.

FOR HIGH VOLTAGE  
CONNECT BROWN TERM 2 TO TERM 6.  
CONNECT WHITE TERM 4 TO TERM 2.

TO REVERSE ROTATION EITHER  
VOLTAGE INTERCHANGE RED  
LEAD WITH BLACK LEAD.

DASH LINES INDICATE LEADS CONNECTED  
TO MOTOR SIDE OF SWITCH.

6	ADDED T MARKINGS	DS 07/19/2018	VC	TOLERANCES UNLESS SPECIFIED		<b>REGAL</b> ™ Regal Beloit America, Inc.	DRAWN ML 02-11-1988			
5	REVISED LINE 2 LOCATION	RM 01-28-1991		DEC.	INCHES		CHK FG 02-11-1988			
4	UPDATED SCHEMATIC PER CN 6014	DA 08-01-1990		.X	±	APPD DNR 03-11-1988				
3	RED LEAD FROM AUX WAS ON ANGLE TERM. PURPLE LEAD WAS RED	DA 07-02-1990		.XX	±	TITLE CONNECTION DIAGRAM 48 FR. DUAL VOLTAGE REVERSIBLE	SCALE 1=1			
2	ADDED CUSTOMER CONNECTION NOTE. CN 6011	BW 08-03-1989		.XXX	±	MAT'L.	REF			
NO.	REVISION	BY & DATE	CHK	ANG	±	FINISH	PREV			
THIS DRAWING IN DESIGN AND DETAIL IS OUR PROPERTY AND MUST NOT BE USED EXCEPT IN CONNECTION WITH OUR WORK ALL RIGHTS OF DESIGN AND INVENTION ARE RESERVED THIS IS AN ELECTRONICALLY GENERATED DOCUMENT - DO NOT SCALE THIS PRINT				RFP	CAD FILE EE9002F		SIZE A	DRAWING NO. EE9002F	PAGE OF	REV. 6
				DIST WP						

CERTIFICATION DATA SHEET

Model#: 56B17D56 J WINDING#: BE48410 NONE 3
CONN. DIAGRAM: A-EE9002F ASSEMBLY: F1 ONLY
OUTLINE: A-SS73711-750

TYPICAL MOTOR PERFORMANCE DATA

Table with 8 columns: HP, KW, SYNC. RPM, F.L. RPM, FRAME, ENCLOSURE, KVA CODE, DESIGN. Row 1: 3/4, .56, 1800, 1725, 56, DP, K, NO DESIGN CODE

Table with 10 columns: PH, Hz, VOLTS, FL AMPS, START TYPE, DUTY, INSL, S.F, AMB°C, ELEVATION. Row 1: 1, 60, 115/208-230, 11/5.5, ACROSS THE LINE, CONTINUOUS, B3, 1.25, 40, 3300

Table with 6 columns: FULL LOAD EFF: 72.0, 3/4 LOAD EFF: 68.3, 1/2 LOAD EFF: 62.2, GTD. EFF, ELEC. TYPE, NO LOAD AMPS. Row 1: 7 / 3.5

Table with 5 columns: F.L. TORQUE, LOCKED ROTOR AMPS, L.R. TORQUE, B.D. TORQUE, F.L. RISE°C. Row 1: 36 LB-FT, 57 / 28.5, 118 LB-FT 328, 88 LB-FT 244, -

Table with 7 columns: SOUND PRESSURE @ 3 FT., SOUND POWER, ROTOR WK^2, MAX. WK^2, SAFE STALL TIME, STARTS /HOUR, APPROX. MOTOR WGT. Row 1: - dBA, - dBA, 0 LB-FT^2, - LB-FT^2, - SEC., -, 0 LBS.

\*\*\* SUPPLEMENTAL INFORMATION \*\*\*

Table with 9 columns: DE BRACKET TYPE, ODE BRACKET TYPE, MOUNT TYPE, ORIENTATION, SEVERE DUTY, HAZARDOUS LOCATION, DRIP COVER, SCREENS, PAINT. Row 1: STANDARD, STANDARD, RIGID, HORIZONTAL, FALSE, NONE, FALSE, NONE, GRAY (POWDER)

Table with 8 columns: BEARINGS (DE, OPE), GREASE, SHAFT TYPE, SPECIAL DE, SPECIAL ODE, SHAFT MATERIAL, FRAME MATERIAL. Row 1: BALL, BALL, MULTEMP SRL, T, NONE, NONE, 1144 STRESSPROOF (C-223), ROLLED STEEL

Table with 7 columns: THERMO-PROTECTORS (THERMOSTATS, PROTECTORS, WDG RTDs, BRG RTDs), THERMISTORS, CONTROL, SPACE /n HEATERS. Row 1: NONE, MANUAL, NONE, NONE, NONE, FALSE, NONE VOLTS

If Inverter equals NONE, contact factory for further information

\*
N
O
T
E
S
\*

Table with 4 rows of inverter specifications: INVERTER TORQUE: NONE, INV. HP SPEED RANGE: NONE, ENCODER: NONE, BRAKE: NONE NONE, NONE P/N NONE, NONE NONE, NONE FT-LB NONE V NONE Hz

DATE: 06/21/2017 09:17:27 AM
FORM 3531 REV.3 02/07/99
\*\* Subject to change without notice.